

BONDI FESTIVAL

SUBMISSION INFORMATION PACK
JULY 2020



BONDIFESTIVAL.COM.AU



WAVERLEY
COUNCIL

BONDI
& DISTRICTS
CHAMBER
OF
COMMERCE



BONDI FESTIVAL WANTS YOU!

Bondi Festival is taking artist submissions for 2020.

The Festival, previously known as Bondi Feast, kicks up a notch in 2020, with an arts program that will celebrate the very best in theatre, comedy, cabaret and circus.

Housed in our Festival Garden in North Bondi Park, Bondi Festival will showcase over 100 performances of diverse and exciting work from a wide range of performance makers across 17 days and nights of festival fun.

In 2020, we will be programming four ticketed venues. On top of this, we welcome applications from works that sit outside of our designated performance venues or are made in response to the festival garden, Bondi and its surrounds. Did we mention we

have an ice-rink, a large-scale lighting installation called The Cocoon and a ferris wheel? Well, we do.

In 2020, we are also thrilled to be welcoming applications from children and family performances for the first time.

So if you are a theatremaker, comedian, aerialist, storyteller, dance troupe, drag queen, cabaret artist, musician, or something else great, and you want to get show up this winter, join us by the beach and be a part of a Bondi you've never seen before.

We look forward to hearing from you!

DATES YOU NEED TO KNOW

14 FEBRUARY

Submissions open

25 FEBRUARY

Submission info night

15 MARCH

Submissions close midnight

EARLY APRIL

Successful/Unsuccessful submissions notified

7 MAY

Bondi Festival program announced and on sale

3-19 JULY

Bondi Festival



PERFORMANCE SPACES

All ticketed venues are within the Bondi Festival Garden, located in North Bondi Park. In considering your choice of space, consider your audience number targets as a combination of the number of shows you're nominating and the size of the venue.

THE SPACES AVAILABLE FOR PERFORMANCE INCLUDE:

UKIYO (200 pax)

Ukiyo is Bondi Festival's largest venue, an upsized version of the intimate Parlour tent. Ukiyo is great for circus shows and performances bursting at the seams. This venue has two rigging points for aerial work.

THE PARLOUR (80-100 pax)

Concurrently intimate and capable of housing larger-than-life performance, The Parlour is perfect for late night cabarets, circus shows and assorted other festival frivolities. This venue has a single rigging point for aerial work.

RASTELLI (50-60 pax)

This tent is perfect for storytelling, stand-up, family performances, solo shows, and small, lo-fi, fringe-style theatre.

THE CONTAINER (15-30 pax)

20ft Shipping container. Small stage. Low-fi. Fringe-style.

OTHER

Want to do a show in the carpark? In the toilets? In the Festival Bar? A roaming show around the streets of Bondi? On the ice-rink? Or have another space in mind altogether? Great – we love that! Pitch away and we can talk.

More technical information on these venues is provided in the **Technical Info Pack**.



FAMILY FRIENDLY

NUMBER OF PERFORMANCES

There is no set number of shows you must perform. Each project will be programmed into a schedule that works for both the artists and the festival. Minimum shows: 1, maximum shows: 7*

*Longer seasons may be negotiated at the discretion of the festival directors.



PLAY

WHAT THE FESTIVAL PROVIDES

- Generous box office split
- Free venue hire
- Publicity support & marketing support including a full listing in the Bondi Festival full-colour program, an event page on the Bondi Festival website and Bondi Festival umbrella publicity campaign and festival print materials
- Front of House and Box Office/Ticketing company
- Show Operator and production support
- Venue Insurance (you must provide public liability insurance)
- Access to Bondi Festival staff, including Festival Directors, Producer, Production Manager and Artist Liaisons for support and advice throughout the festival
- Artist Passes for crew and creatives, providing you with free entry to all performances with tickets remaining at the time of performance. (Access is not guaranteed and is dependent on capacity)

WHAT YOU PROVIDE

- A fully-rehearsed production with executed licence agreement/s to perform the show (where appropriate, including APRA)
- Publicity and marketing for your individual show
- At least two high-res promotional images - one landscape and one portrait (to be submitted with your application)
- Appropriate crew for your bump in and bump out. You must ensure that everything brought in is removed during bump out, that the venue is returned to its pre-bump in condition and that all areas are cleaned
- Your own Facebook event page to invite audiences to the production. This page must meet all of Bondi Festival's social media specifications
- A gung-ho attitude - make sure your whole team is on board with promoting your show! Get sharing, get flyering, and be part of the conversation
- Public Liability Insurance



SELECTION CRITERIA

Bondi Festival programs international and interstate shows that are looking for a premiere Sydney season. We support the presentation of new local works, and knock-out shows that have already had a short Sydney season and are screaming out to be remounted! Please note, the festival is not for work-in-progress showings.

GOOD WORK

ARTISTIC CALIBRE

GOOD PEOPLE

QUALITY OF ARTISTIC TEAM

GOOD CHOPS

EXPERIENCE OF PRODUCER/TEAM

BONDI FEAST VALUES

ORIGINALITY

in the stories we tell and how we tell them.

INNOVATION

and finding the alternative in form and genre.

COURAGE

in using theatre and performance to respond to culture and society.

ACCESSIBILITY

welcoming all to create, witness and present in a creatively collaborative nature.

SUITABILITY

to the festival format.



HOW TO APPLY

Visit the online submission form
bondifestival.com.au/submissions

Fill in all the details, upload any attachments, press submit and your submission is complete. Make sure you've read through both this document AND the Technical Info Pack in their entirety prior to submitting so you are well-informed before diving in.

We encourage you to attend our Bondi Festival Information Night on Tuesday 25 February to hear more about Bondi Festival and ask any questions about your project before submitting your application. Even if you've presented with us before as Bondi Feast, we highly recommend attending to learn more about how Bondi Festival will operate in 2020.

ACCESSIBILITY

Bondi Festival information including the Submission Form and Technical Info Pack are available in accessible formats, upon request. Formats include word documents and large print. We also accept applications for Bondi Festival in accessible formats. Please email bondifestival@waverley.nsw.gov.au or call 02 9083 8771 for further information.



Submissions
close midnight
Sunday 15 March

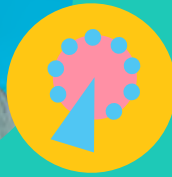
ENQUIRIES: bondifestival@waverley.nsw.gov.au
02 9083 8771



YOU WILL BE ASKED TO PROVIDE

- Bios & headshots of all the creatives involved in the project
- Project description
- Brief Marketing copy
- Additional script/images/press info
- Preferred performance space and dates
- Preferred number of shows
- Hi-res promo image (landscape orientation)
- Basic technical requirements

FAQS



Q: Is Bondi Festival the same as Bondi Feast?

A: Same-Same but different! In 2020 Bondi Feast has joined powers with Bondi Winter Magic to bring you one great big winter arts festival for all ages. Our arts program remains the same, with the inclusion of family programming. We now also operate over 19 days instead of 10, and run both day and night performances 7 days a week.

Q: If I apply for Bondi Festival, will I definitely be programmed?

A: Bondi Festival is a curated festival, which means that not all submissions will be programmed.

Q: Are there any registration costs?

A: No! There are no registration fees for Bondi Festival.

Q: Are there any staff costs associated with Bondi Festival?

A: No! Bondi Festival will run Front of House, Box Office and Bar at no cost to artists. We will also have a festival production manager and a tech operator for your show. You're welcome to bring your own operator, if you feel more comfortable with that or have a large number of cues for example. You will be responsible for bumping your show in and out, including any changeovers. If you are programmed and you require additional crew for your tech or performances, associated costs may be passed on to you. Additional crew needed might

include sound technicians, follow-spot operators or AV technicians. Get in touch if you require any further information in this regard.

Q: If I am coming from interstate or overseas, will Bondi Festival pay my flights or accommodation?

A: Unfortunately Bondi Festival has limited resources and isn't currently in a position to be able to provide this level of support.

Q: Will you buy my show to be a part of Bondi Festival?

A: Unfortunately Bondi Festival has limited resources and isn't currently in a position to be able to buy shows outright.

Q: Will the Bondi Festival publicist provide publicity for my show?

A: Every Bondi Festival show will be part of our over-arching publicity campaign, however we will not provide dedicated publicity for your show. We recommend you have a dedicated publicity campaign and/or hire a publicist for your production. We are happy to provide a contact list of Sydney-based publicists. Our festival publicist is also happy to provide you with general publicity advice.

Q: Is Bondi Festival in the Bondi Pavilion?

A: No, this year's festival will be held entirely within our new Festival Garden in North Bondi Park.

"It was a wonderful experience for us and a great context to present the work in, but also everyone was just SO lovely... I was prepared for there to be at least some difficulty but there was none at all. It was such a joy."
- Hannah Goodwin, 2018 festival artist

"There's nothing quite like that buzz... Thank you for creating a safe, supportive and overwhelmingly positive place that gives artists an opportunity to find their voice, express their ideas, take control of their artistic trajectory and ultimately shine. I had a wonderful time."
- Claire Lovering, 2018 festival artist

"The fee structure feels very artist friendly and low risk on the performer/show." - 2019 Festival Artist Survey

"Festival vibe is really lovely and lots of fun. Core festival team were approachable and easy to contact with quick turn around."
- 2019 Festival Artist Survey

"Very friendly, approachable and supportive team. Really great communication prior to/during the festival - felt in the loop with information, supported with all questions/concerns. Very flexible and accommodating to our team/show's needs."
- 2019 Festival Artist Survey

"Fun, vibrant and had an awesome selection of performances."
- 2019 Festival Artist Survey

"Lovely warm audiences, fantastic friendly enthusiastic festival staff, thoughtful and considered responses to any queries along the way."
- 2019 Festival Artist Survey



WINTER NEVER LOOKED SO GOOD

SEE



BONDI FESTIVAL

3 — 19 JULY 2020

If you have any further questions,
please get in touch via email
bondifestival@waverley.nsw.gov.au

BONDIFESTIVAL.COM.AU



WAVERLEY
COUNCIL

BONDI
& DISTRICTS
CHAMBER
OF
COMMERCE